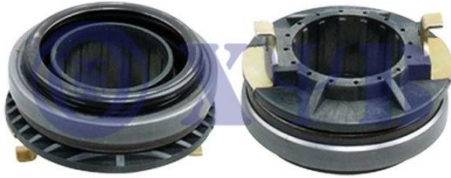


**Automobile Clutch Release Bearing  
4142128000**

High quality Automobile Clutch Release Bearing 4142128000 is offered by China manufacturer XYB BEARINGS®. **Automobile Clutch Release Bearing used for HYUNDAI Accent Part Number 4142128000, 4142122800, VKC3666 [XRB2506]**

**Product Description**

Vehicle	OEM NO.
HYUNDAI	4142122800
HYUNDAI	4142128000
HYUNDAI	41421-22810
SKF	VKC3666
LUK	500 0375 60
SACHS	3151 994 601
VALEO	804117

XYB BEARINGS® is an professional Automobile Clutch Release Bearing 4142128000 used for HYUNDAI Accent Part Number 4142122800, VKC3666 [XRB2506] manufacturer, factory and supplier in China. We have been specialized in auto parts for many years. Our products have a good price advantage and cover most of the European and American markets. We look forward to becoming your long-term partner in China.

**XYB Automobile Clutch Bearing [XRB2108] Parameter**

Outer Diameter [mm]: 62.5

Width [mm]: 37.4

Weight [kg]: 0.15

**Automobile Clutch bearing used for HYUNDAI Accent Part Number 4142128000, 4142122800, VKC3666 [XRB2506]**

**Application**

VEHICLE	Model	Engine	Power	Year
HYUNDAI	ACCENT I (X-3)			1994/10-2000/01
HYUNDAI	LANTRA II Wagon (J-2)			1996/02-2000/10
HYUNDAI	COUPE (RD)			1996/06-2002/04
HYUNDAI	LANTRA II (J-2)			1995/06-2000/10
HYUNDAI	ACCENT Saloon (X-3)			1994/10-2000/01
HYUNDAI	ACCENT II (LC)			1999/09-2005/11
HYUNDAI	GETZ (TB)			2002/08-

XYB clutch release bearings are engineered with features of high precision, low noise and long lifetime.

Clutch kit is a set of transmission parts, including a pressure plate, a clutch disc and a clutch release bearing or concentric slave cylinder to ensure correct functions of power transfer to help the driver start, shift and stop his car smoothly and steadily.